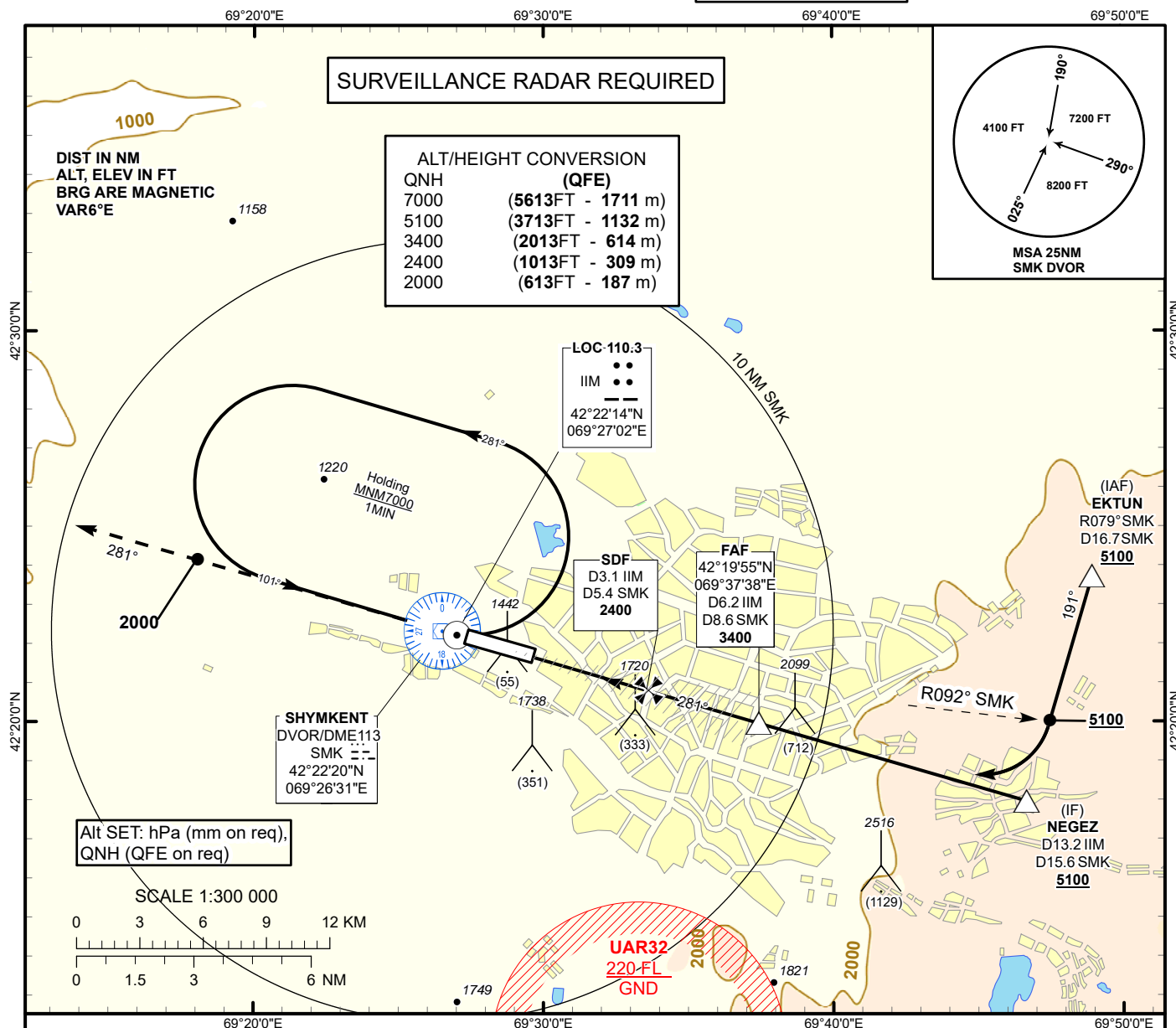


INSTRUMENT
APPROACH
CHART - ICAO

AERODROME ELEV 1387 FT
HEIGHTS RELATED TO
AD ELEV

SHYMKENT TOWER 125.9
SHYMKENT ATIS (EN) 119.2
SHYMKENT ATIS (RU) 126.6

SHYMKENT
LOC/DME
RWY 28



MISSED APPROACH

Climb on track 281° to 5100ft.
After passing 2000ft radar
vectoring will be provided.

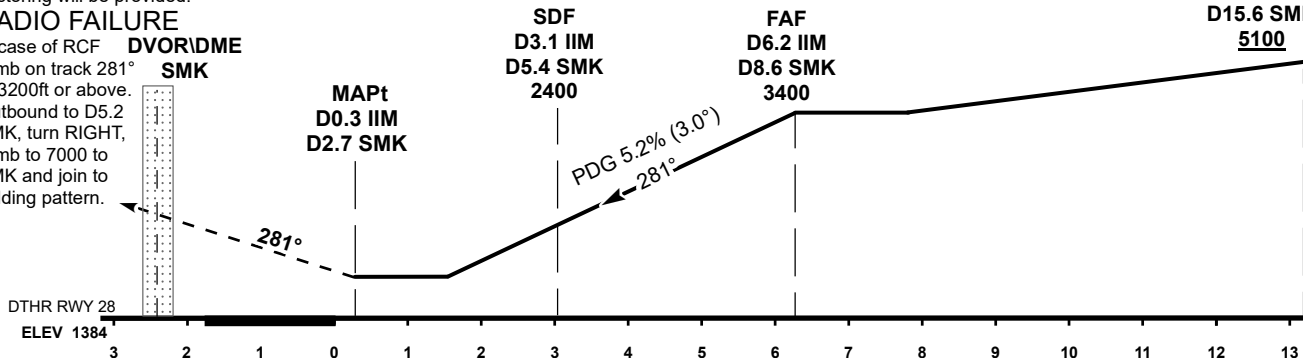
RADIO FAILURE

In case of RCF DVOR/DME
climb on track 281°
to 3200ft or above.
Outbound to D5.2
SMK, turn RIGHT,
climb to 7000 to
SMK and join to
holding pattern.

DTHR RWY 28
ELEV 1384

TRANSITION ALT 10000 FT

IF
NEGEZ
D13.2 IIM
D15.6 SMK
5100



Aircraft Category		A	B	C	D	DIST to DTHR DME IIM	NM	1.0	2.0	3.0	4.0	5.0	6.2
Straight-in Approach OCA/H	LLZ (GP INOP) SDF	1930(540)	1930(540)	1930(540)	1930(540)	DME SMK	NM	3.4	4.4	5.4	6.4	7.4	8.6
	LLZ (GP INOP) WO SDF	2340(960)	2340(960)	2340(960)	2340(960)	ALTITUDE	FT	1754	2073	2391	2710	3028	3400
						HEIGHT	FT	(367)	(686)	(1004)	(1323)	(1641)	(2013)
DME IIM ZERO RANGED TO THR RWY 28													
Aerodrome Operating Minima MDH ft x RVR (CMV)	LLZ (GP INOP)					GS	Kt	80	100	120	140	160	180
						Desc.Rate(5.2%)	ft/min	420	530	630	740	840	950
						FAF-MAPt(5.9NM)	min:sec	4:30	3:36	3:00	2:34	2:15	2:00

CHANGE: Revised.

SHYMKENT
LOC/DME

AERONAUTICAL DATA TABULATION

LOC/DME approach to RWY28 from EKTUN, NEGEZ	
Fix/point	Coordinates
(SDF) D3.1 IIM, D5.4 SMK	42° 20' 49.0"N 069° 33' 32.6"E
(FAF) D6.2 IIM, D8.6 SMK	42° 19' 55.4"N 069° 37' 38.4"E
NEGEZ (IF) D13.2 IIM, D15.6 SMK	42° 17' 57.8"N 069° 46' 39.6"E
EKTUN (IAF) R079°, D16.7 SMK	42° 23' 43.2"N 069° 48' 57.0"E
SMK DVOR/DME	42° 22' 20.4"N 069° 26' 30.6"E
IIM LOC	42° 22' 13.7"N 069° 27' 01.5"E
DTHR RWY 28	42° 21' 40.62"N 069° 29' 34.86"E
Final approach descent angle is 3°	